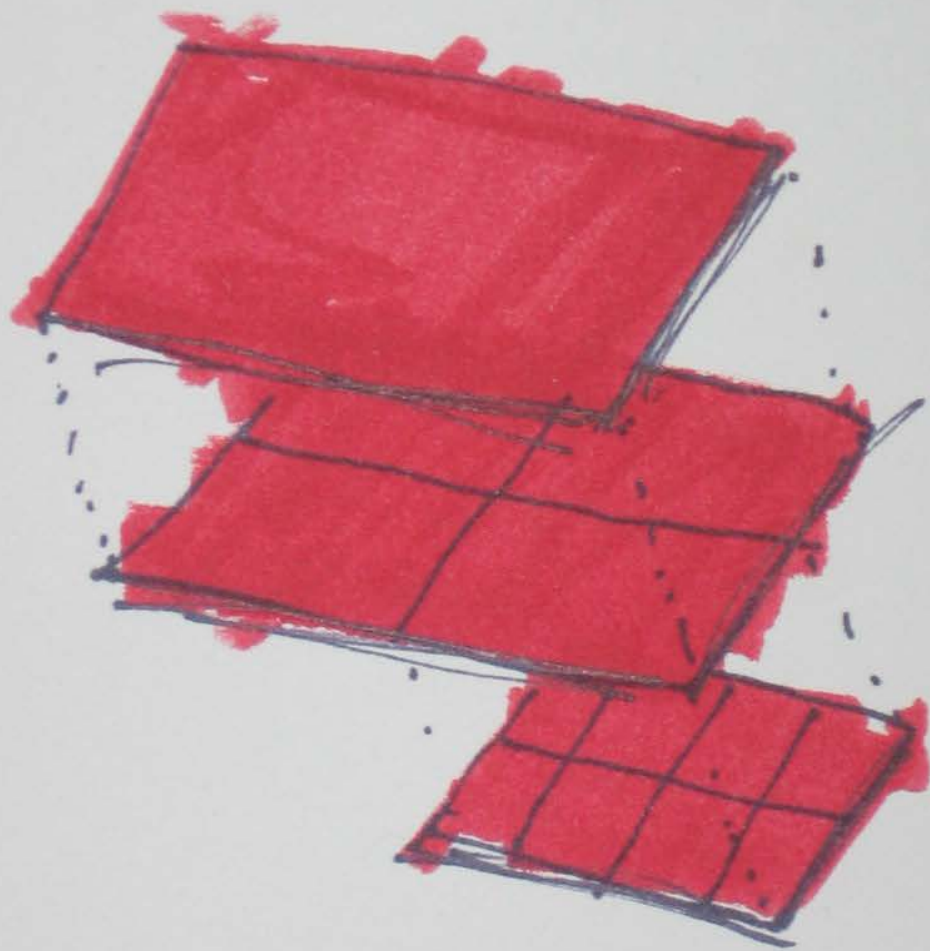
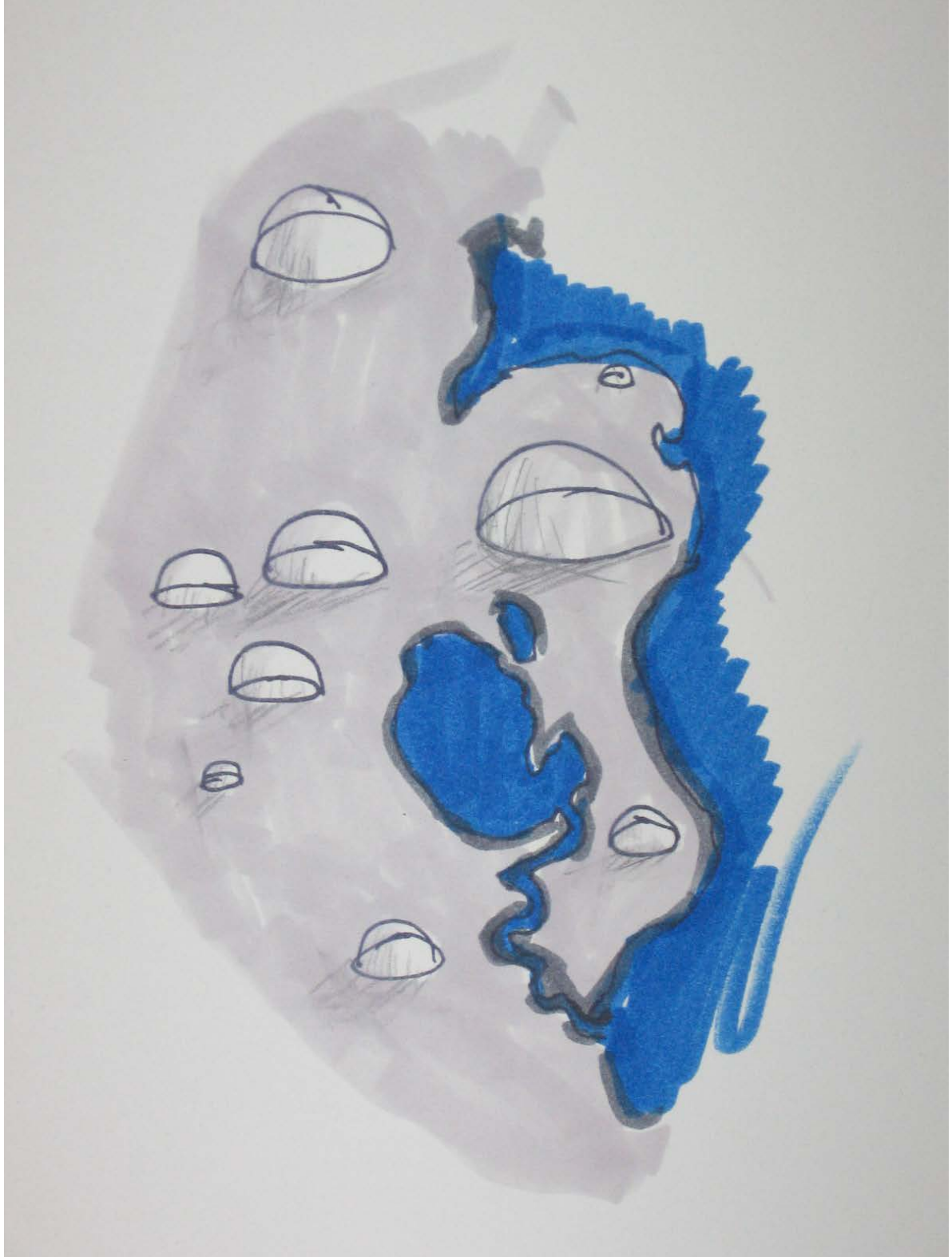
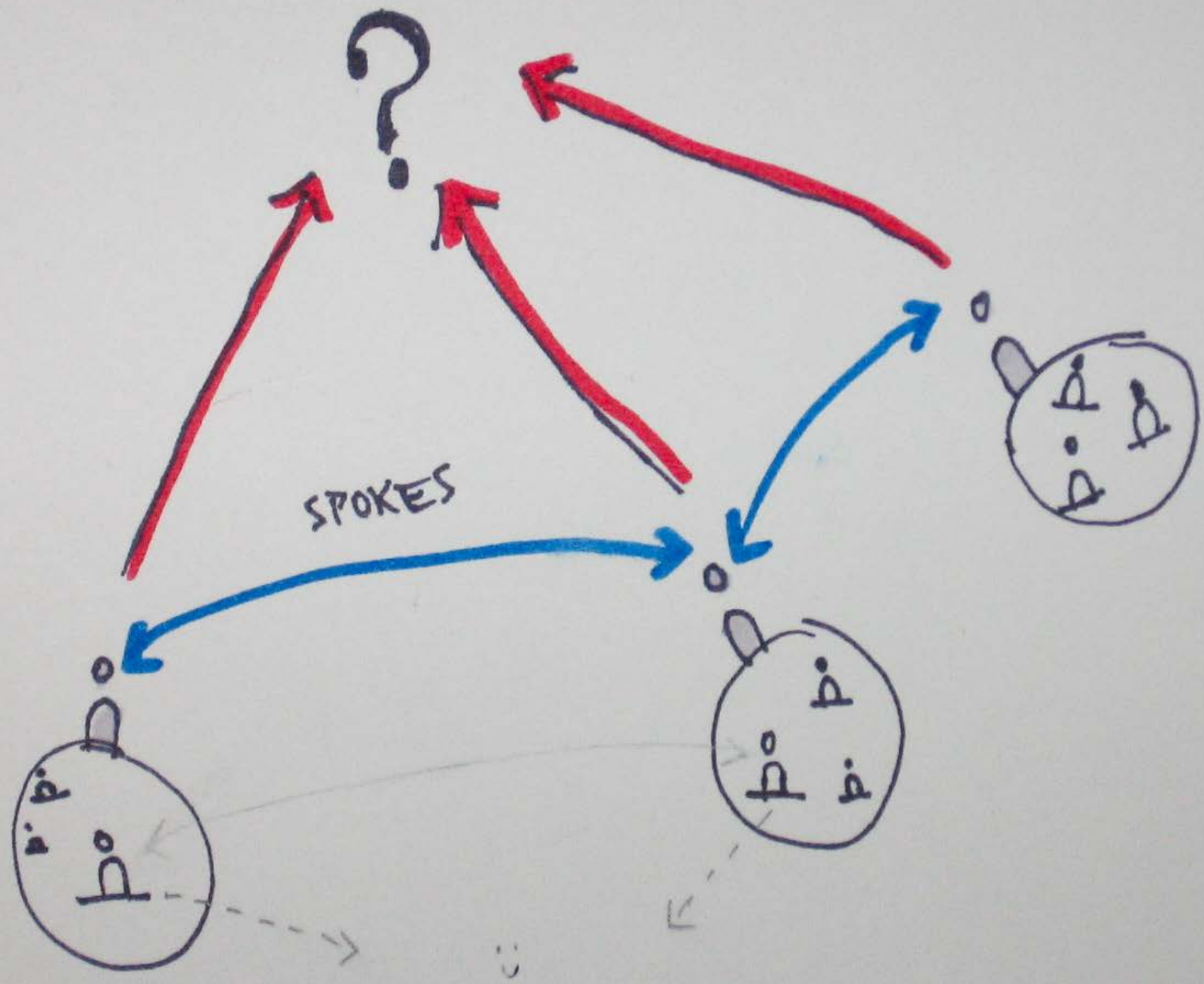
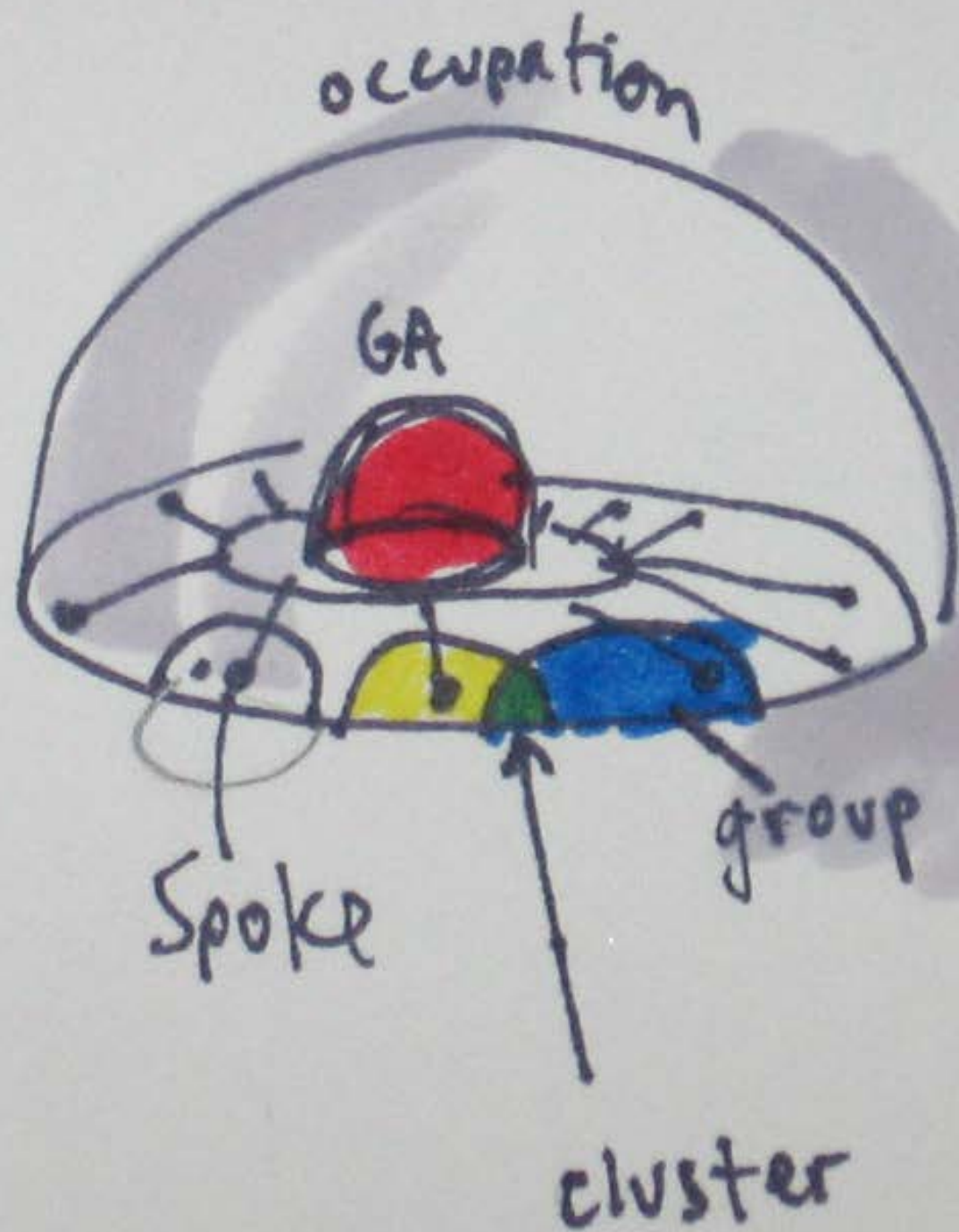


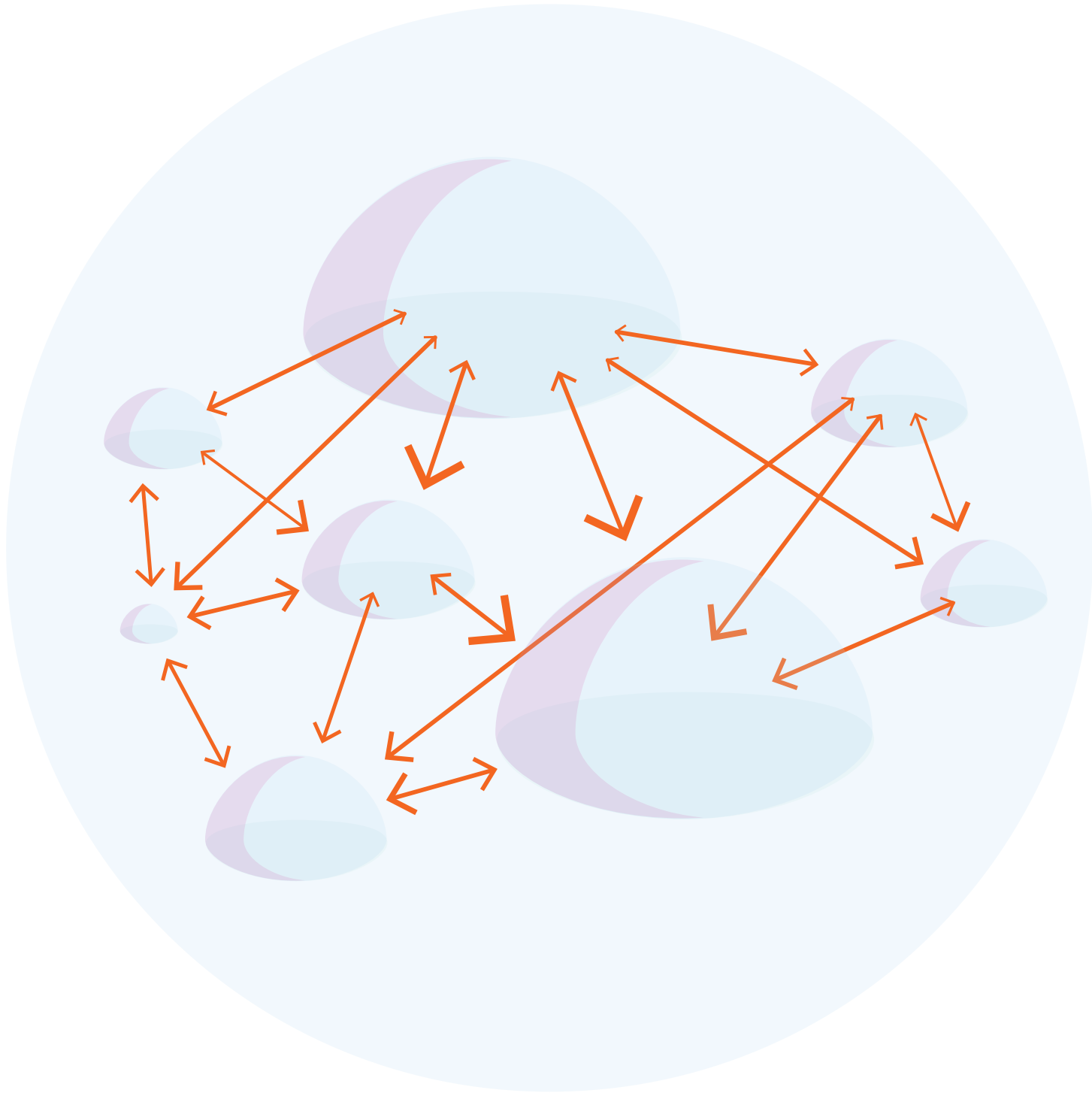
SQUARE







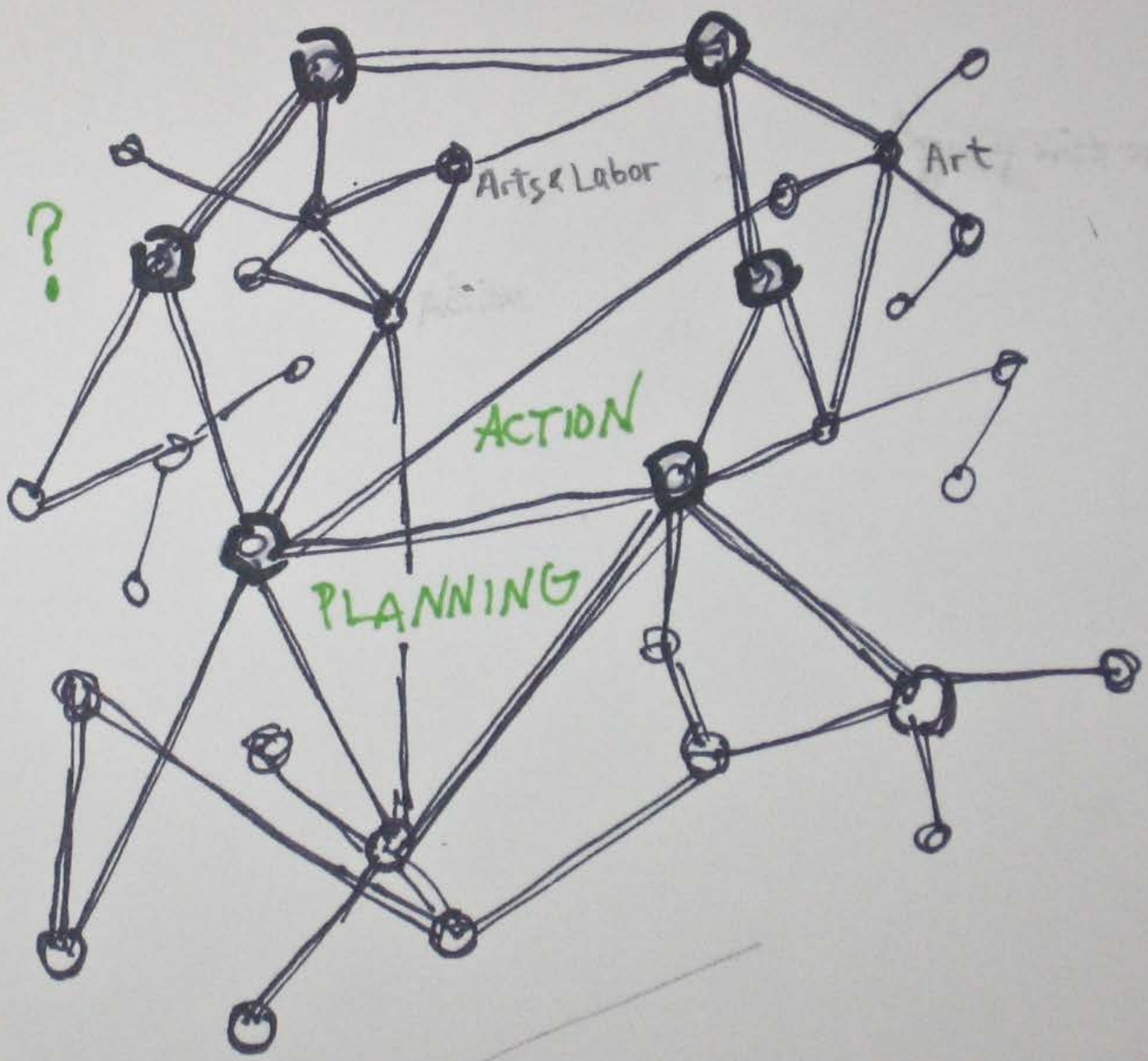




Commons link up in clusters

LEGAL

CREATIVE



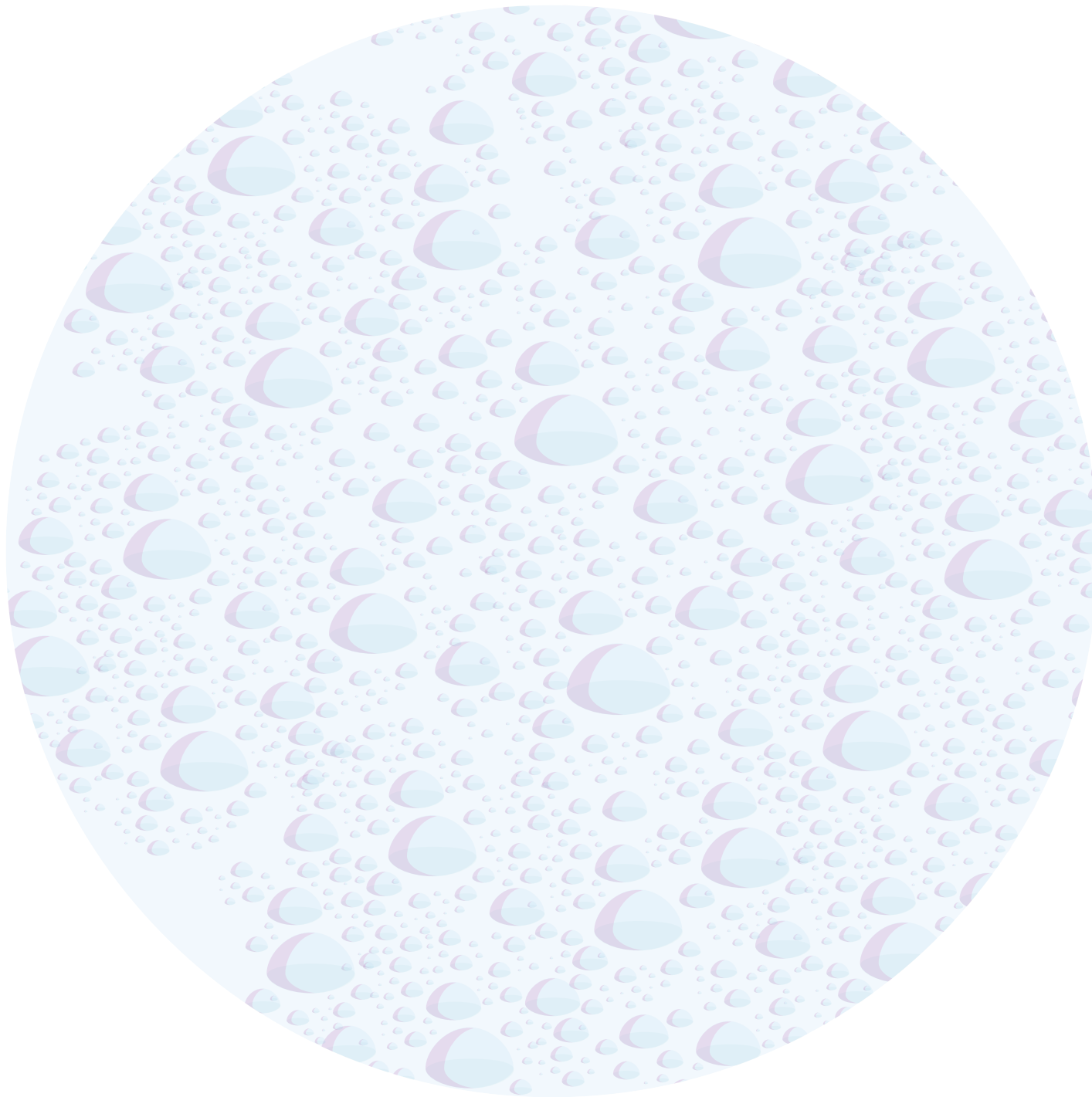
NETWORK

Subnet

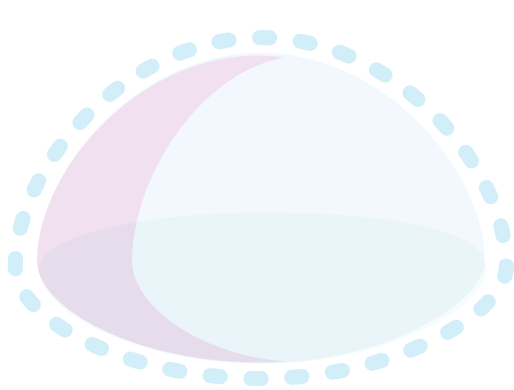


Constellations form

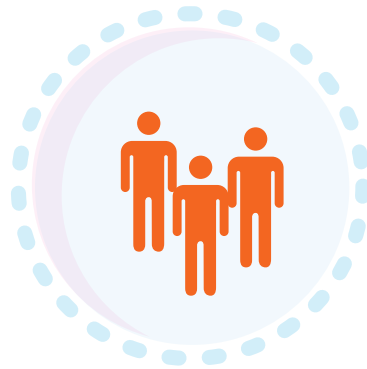




As the network grows, links and clusters form galaxies, unexpected ideas emerge.



Commons



Groups



Projects and People



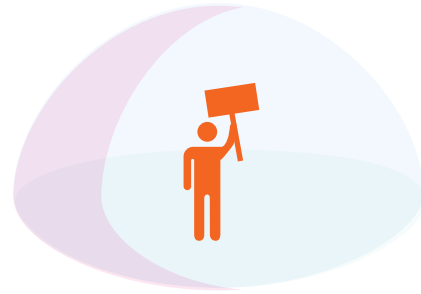
'Public faces'



All have 'Public faces'



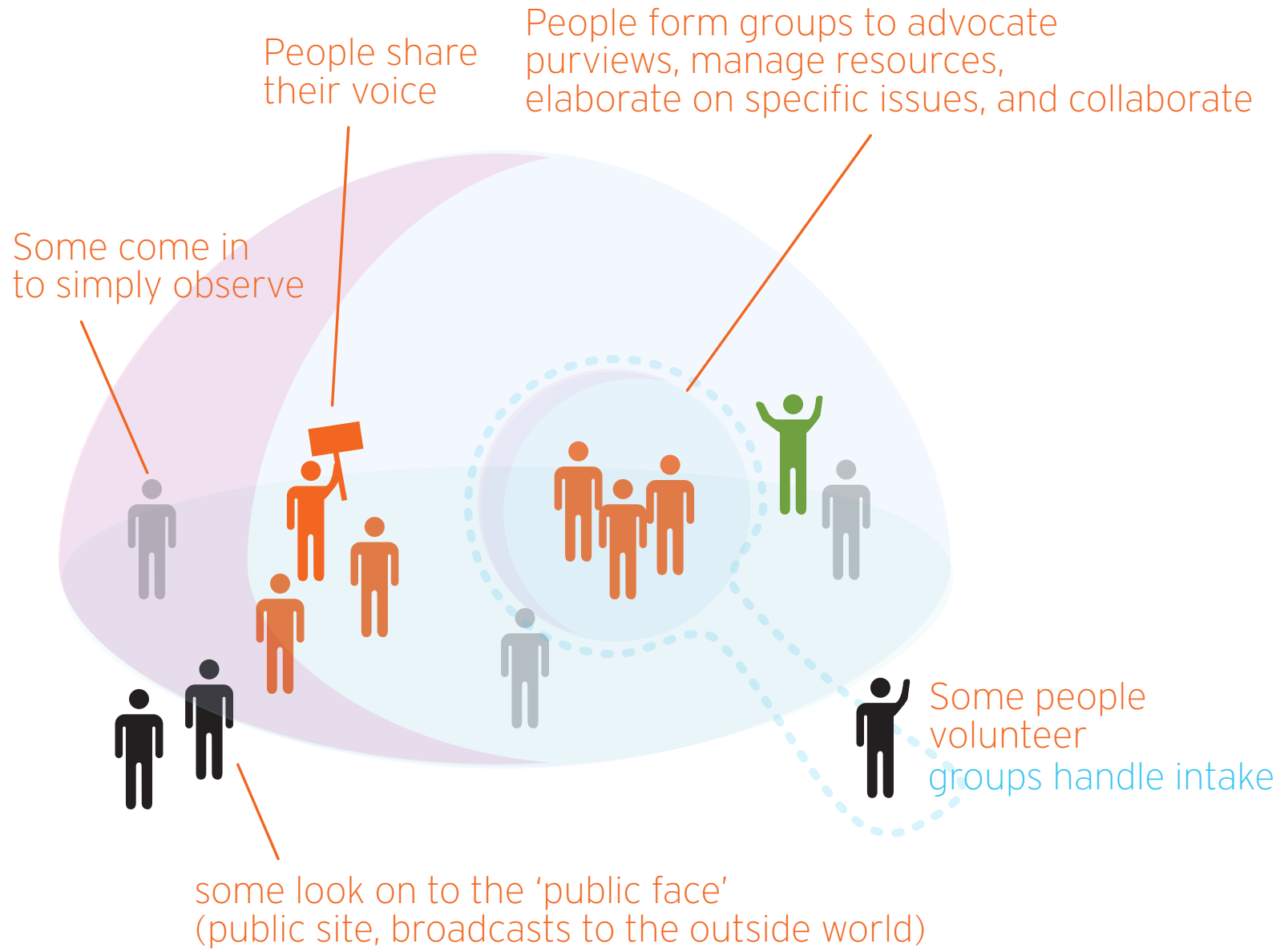
It starts  
with you.



You take  
your grievances  
to the commons



Other's join in.  
together they form  
a decision making body.  
(like the ga)



More people arrive, the number of groups multiplies.

Look Another Commons!

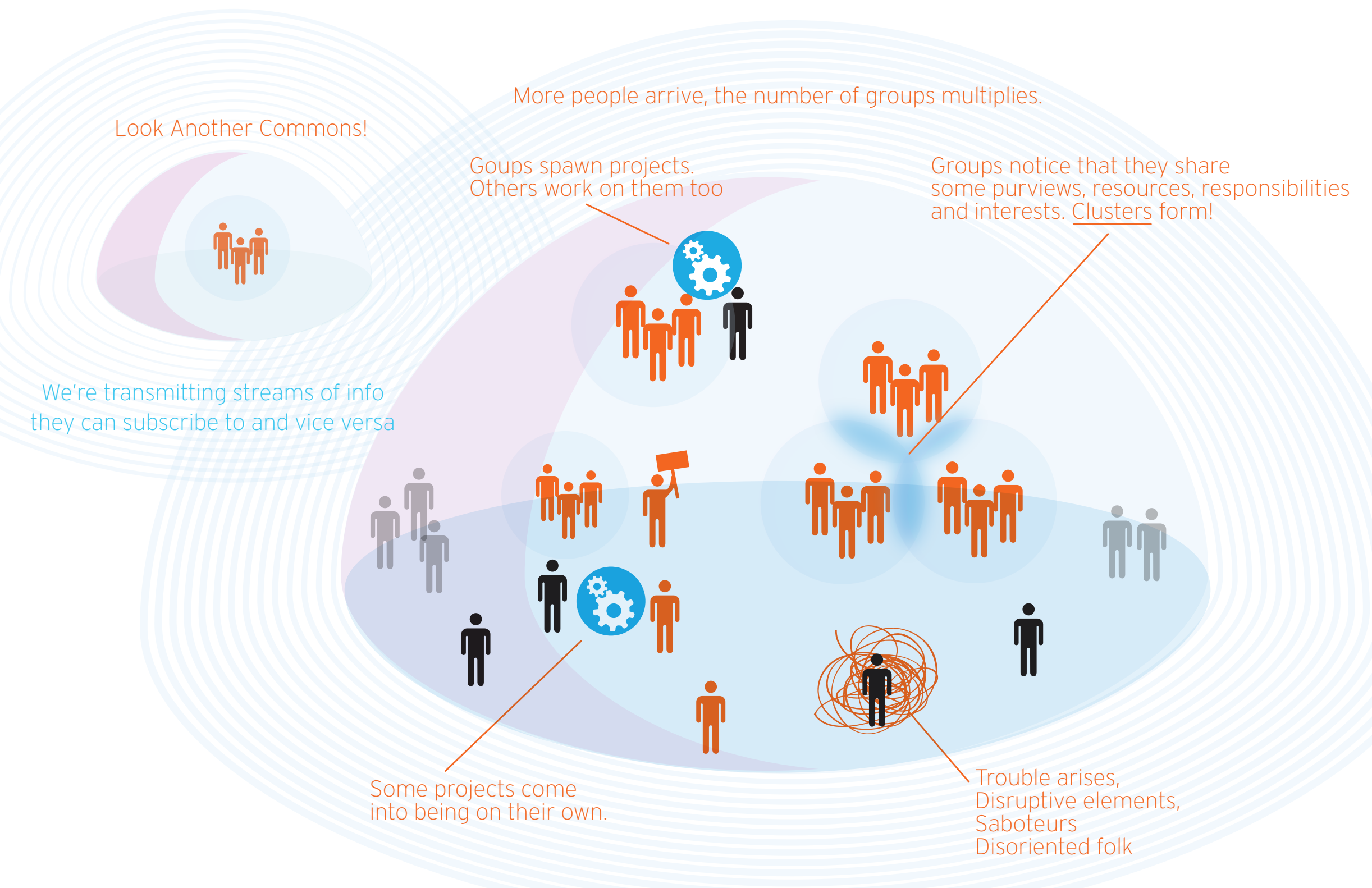
Groups spawn projects.  
Others work on them too

Groups notice that they share some purviews, resources, responsibilities and interests. Clusters form!

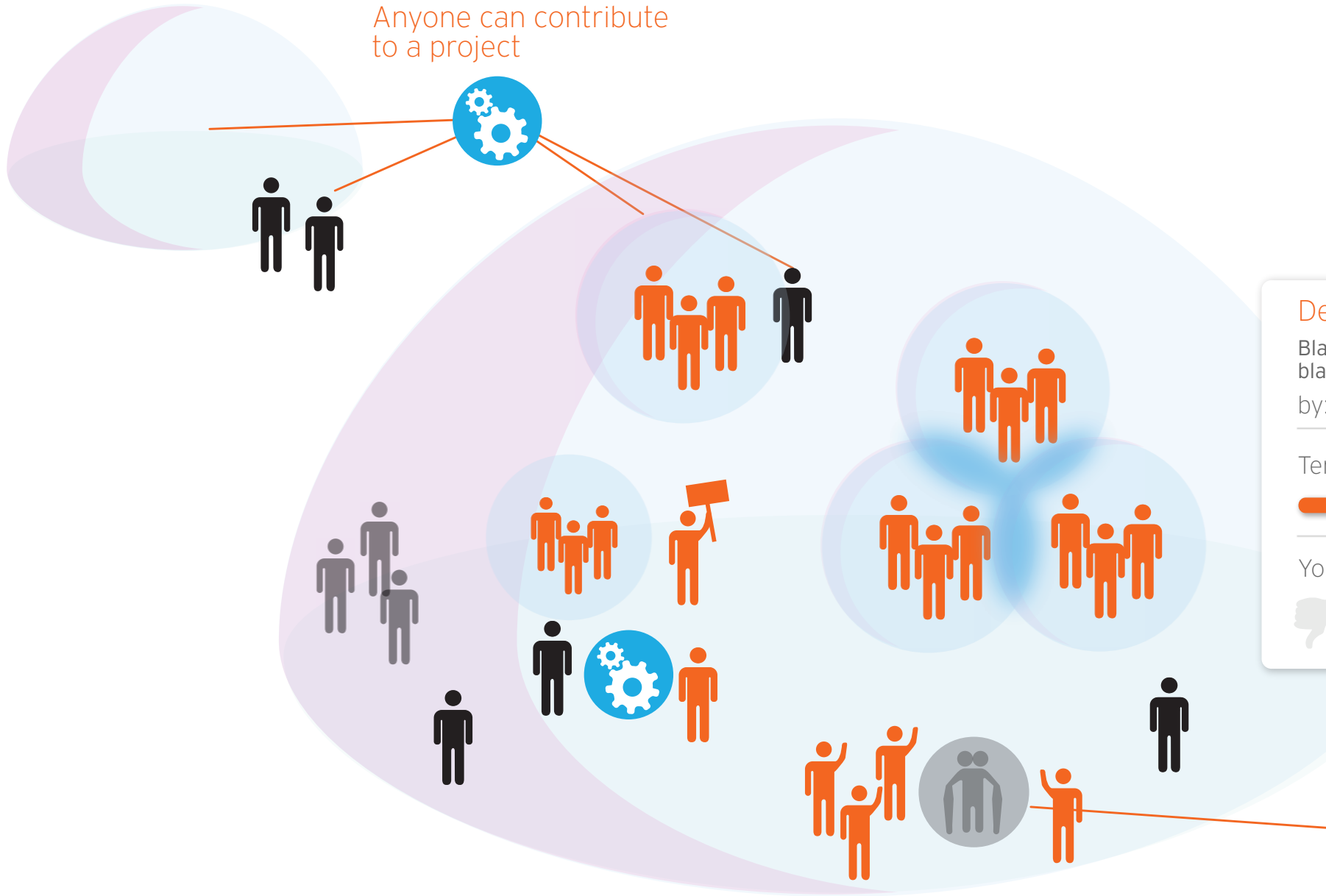
We're transmitting streams of info they can subscribe to and vice versa

Some projects come into being on their own.

Trouble arises, Disruptive elements, Saboteurs, Disoriented folk



Anyone can contribute to a project



Decision summary i

Blah blah blah blah, blah blah blah, blah blah blah

by: Modified Consensus

---

Temperature check 50%

---

Your position 35%

Through peer decision making troublemakers are marked as trolls and isolated (temporarily, a path back into good standing must be worked out)

# It's Made of People

Isolation Target

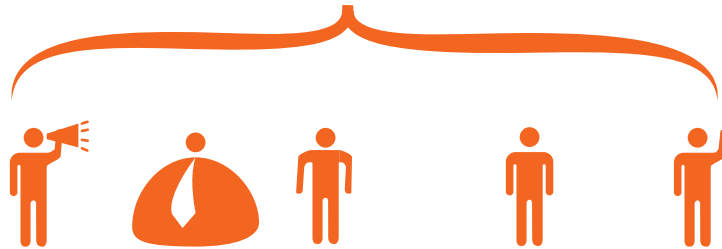


trolls

The motivations vary but they drain the life of the movement. They need to be put in timeout. Crystal prisons, echo chambers and isolation booths. Or given access to engage only where its useful (many of them think they are helping, or even are helping outside the trolling).

Just because someone's a board flamer, or takes contrarian perspectives/activities doesn't mean they aren't making a difference on the ground.

Education Target



media

1%

hostile

sidelines

self identified  
99%

Some are on our side, this is good. Some are open to reason and other perspectives, when presented (perhaps a bit isolated) Some of them are grumpy, but enjoying life too much to care. Some of them are trying to earn enough to check out to a tropical island so they can drink in isolation, and have given no thought to the interconnectedness of all things. Some of them are hiring eastern european hackers, contacting congresspeople and otherwise aiming to destroy us before its too late.

Support/Empower target

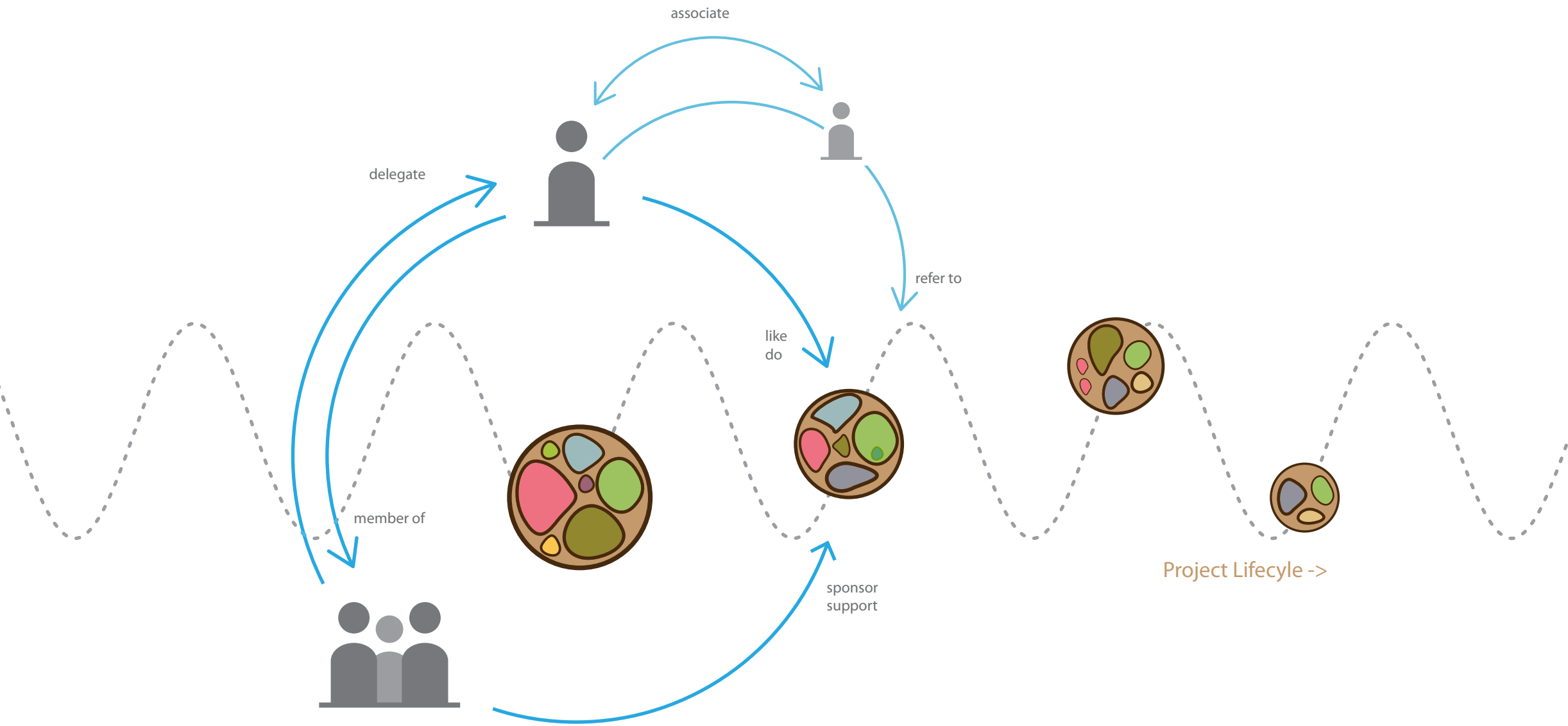


activated

important to extrapolate subsets, combine, etc.

how do they collaborate and in what contexts?  
what are the outcomes of these activities?  
how can we support that.

we should look to encourage movement on this axis →



People work on Projects in Groups